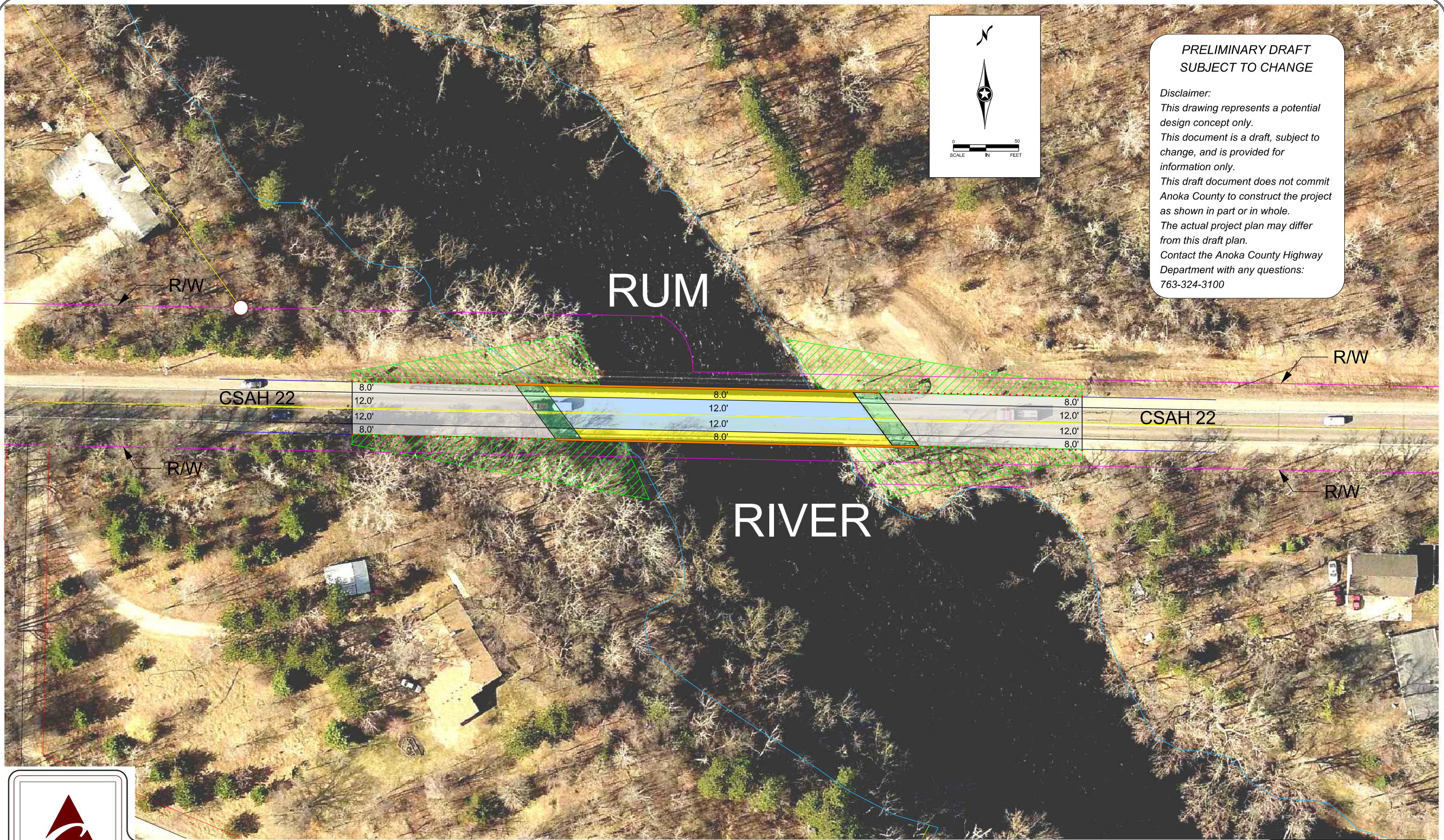
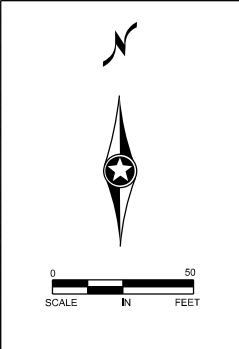


**PRELIMINARY DRAFT
SUBJECT TO CHANGE**

Disclaimer:
 This drawing represents a potential design concept only.
 This document is a draft, subject to change, and is provided for information only.
 This draft document does not commit Anoka County to construct the project as shown in part or in whole.
 The actual project plan may differ from this draft plan.
 Contact the Anoka County Highway Department with any questions:
 763-324-3100



CSAH 22 (Viking Blvd.)

GENERAL LAYOUT
 CSAH 22 @ RUM RIVER
 BRIDGE No 02519