

# Janes Field

## Anoka County / Blaine Airport



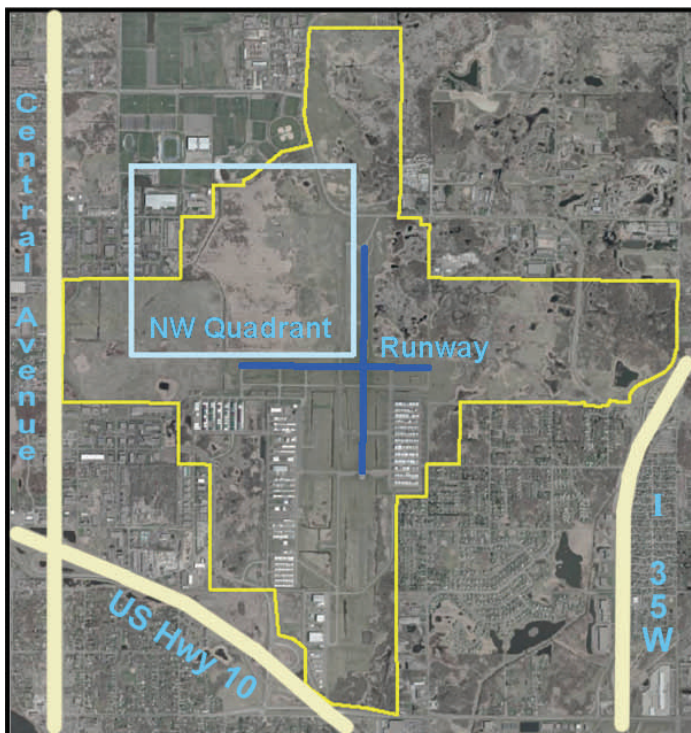
### About Janes Field

- ◆ Largest of the six Metropolitan Airports Commission (MAC) reliever airports
- ◆ Generates over \$30 million in economic activity
- ◆ Supports over 100,000 takeoffs and landings annually
- ◆ Accommodates a diverse mix of *corporate jets*, *recreational* and *antique aircraft*
- ◆ Serves as a base for nearly 500 aircraft
- ◆ Eases air traffic congestion at the MAC's major airport, Minneapolis-St. Paul International
- ◆ A unique public / private partnership provides for vast improvements and additions to the airport through 2006.



### Planned Additions and Improvements

Increased dependence on reliever airports has resulted in a demand for improved facilities. The MAC, Anoka County, and the City of Blaine have entered into a unique partnership to provide major improvements to *Janes Field*. The planned improvements for this very important public asset will not only result in a more convenient and functional airport, but will also enhance general aviation safety, reduce noise, and spur economic growth in the community.



This map outlines the northwest quadrant of Janes Field, which will be the site of nearly 600,000 sq. ft. of new hangar space.

#### Completed improvements include:

- ◆ Extended the east-west runway to 5,000 feet from 4,000 feet, making it usable by more planes in more weather conditions.
- ◆ Lengthened the parallel taxiway serving the east-west runway.
- ◆ Installed an instrument landing and approach lighting system to enhance safety and reduce noise, particularly in low-visibility.

#### Future improvements include:

- ◆ Providing opportunities for an additional fixed-base operator serving aviation needs.
- ◆ Developing the long awaited northwest building area with room for nearly 600,000 sq. ft. of additional hangar space.
- ◆ Constructing road access, sanitary sewer and water systems, and mitigating wetlands impacted

# Public / Private Funding Breakdown



Anoka County will issue approximately \$20 million in general obligation bonds to finance most of the improvements. \*



The City of Blaine will own and operate water and sanitary sewer lines serving the new hangar development area.



The MAC will contribute \$2 million in federal Airport Improvement Program grants, as well as an anticipated \$450,000 in federal airport entitlement funds.

\* The county will lease the 40-acre development area on the northwest side of the airport from the MAC for a 30-year period, and sublease the hangar area to Anoka Airport Development LLC, which will develop hangars and lease them to aircraft owners and commercial operations.



Located between Highway 10 and Interstate 35 W.

## Features of Janes Field

- ◆ State-of-the-art *air traffic control tower*
- ◆ *4,855-foot north-south runway*
- ◆ Newly expanded *5,000-foot east-west runway*
- ◆ 20 minutes from the business districts of Minneapolis and St. Paul
- ◆ Access off Hwy 10 and I-35W.
- ◆ Located near the *National Sports Center*, and the *Tournament Players Club (TPC) of the Twin Cities*.



Control Tower

## How Does This Project Benefit Anoka County ?

These improvements will make the airport safer and more functional for business, as well as decrease noise for area residents. In addition, property taxes on hangars and aviation-related businesses constructed in the new development, as well as revenues from the sublease to Anoka Airport Development, will provide revenue sources the county can use to help repay the bonds.

**Janes Field**  
**Anoka County / Blaine Airport**  
 8891 Airport Road, Box C1  
 Blaine, MN 55449  
 (763) 786-9490



### For more information:

**Jon Olson**  
 Anoka County Public Services Division Manager  
 jon.olson@co.anoka.mn.us - (763) 323-5789

**MAC**  
 (612) 726-8135

[www.co.anoka.mn.us/EconomicDevelopment/projects-airport.asp](http://www.co.anoka.mn.us/EconomicDevelopment/projects-airport.asp)

